

**ROYAL SCOTTISH COUNTRY DANCE SOCIETY
TWIN CITIES BRANCH**

**SILVER ANNIVERSARY
MASKED BALL**



*Saturday, 19 February 2000
University of St. Thomas, St. Paul, MN*



MUSIC BY THISTLEDOWN



After-Ball Party

*at the home of Lara & Dan Friedman-Shedlov
2105 Emerson Avenue South, Minneapolis
telephone 612.874.8299*

Sunday Morning Potluck Brunch

*at the home of Judith Palmateer
1935 Berkshire Drive, Eagan
telephone 651.452.0463*

SILVER ANNIVERSARY MASKED BALL

Dinner..... 6:00 p.m.

Grand March and Dancing (see back for program of dances)..... 7:00 p.m.

FIRST INTERVAL

Welcome

by Judith Palmateer, Chair

Raffle Drawing

Entertainment

Two medleys of dances from the RSCDS Twin Cities Branch

25th Anniversary Book, New Friends

“Crazy Crossing/Serendipity/The McIntosh Legs”

“Lady Grace/Amy in the Middle”

Performed by

Katrina Begordis, Eric Dam, Lara Friedman-Shedlov,

Dan Grundtner, Sherry Gwegorryn, John Shackleton, Hazel Shirley, Philip Woutat

SECOND INTERVAL

Surprise Entertainment

MUSIC BY THISTLEDOWN

Anne Benson, Sherry Ladig,
Pat O'Loughlin, and Ken Steffenson

Piper for Grand March

Tad Meyers

Dance walkthroughs

Dan Grundtner and Lara Friedman-Shedlov

Dance MCs

Bonny McIntyre, Lara Friedman-Shedlov, and Joy Gullikson

Special Thanks to

Nancy Wirsig McClure, www.hand2mouse.com, for design & layout

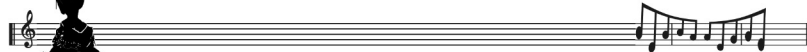
4



MARY STEWART

32 S 2C L.A. 25th Anniversary
(couple facing couple round the room)

- 1-8 1W and 2W dance a PETRONELLA TURN to end back-to-back facing partners. 1C and 2C SET and TURN RH to original places.
- 9-16 All CHANGE PLACES BH with opposite, CHANGE PLACES BH with partner, CHANGE PLACES BH with opposite, and CHANGE PLACES BH with partner to original places.
- 17-20 All face the center of the circle. Dancers in the inside circle, DANCE IN towards each other, CAST away from each other, and then DANCE OUT, their partners following them, to form a line of 4 facing into the circle with each woman ending on her partner's right. The lines join up to form one big circle.
- 21-24 All ADVANCE AND RETIRE.
- 25-28 All dance HALF A REEL OF 4.
- 29-32 TURN BH with partner to face a new couple.



5

THE HAPPY MEETING

8x32 J.....2C RSCDS 29

1-8 1M and 2W dance *DIAGONAL FIGURES OF EIGHT*: They pass each other right shoulder, cast around their partner, pass each other right shoulder, and dance around the other's partner to original positions.

9-16 2M and 1W *REPEAT* bars 1-8 (passing each other left shoulder).

17-20 1C *SLIP DOWN* the middle for 2 bars and *SET*.

21-24 1C *SLIP UP* the middle and *CAST* to 2nd place.

25-28 2C and 1C *ADVANCE AND RETIRE* and *CLAP*.

29-32 2C and 1C *TURN RH*.

6



BEYOND AMBIVALENCE

8x40 R.....3C *New Friends/McIntyre*

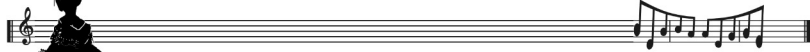
1-8 1C and 3C dance a *DOUBLE FIGURE OF EIGHT* around 2C (1C cast to begin).

9-16 1C *LEAD DOWN* for 3 bars, *LEAD UP* for 3 bars, and *CAST* to 2nd place (2C step up on bars 7-8).

17-24 2C, 1C, 3C dance 6-bar mirror *REELS OF 3* on the sidelines, 1W giving left shoulder to 3W and 1M giving right shoulder to 3M begin. On bars 23-24, 1C *CROSS RH* to end back-to-back, facing out the opposite sides.

25-32 1C dance *DOUBLE TRIANGLES* and end facing 1st corners ready for

33-40 1C *SET TO CORNERS AND PARTNER* (hello-goodbye setting), ending in 2nd place on their own sides.



7

UP IN THE AIR

8x32 S.....5C RSCDS 20

1-8 1C CAST down for 4 bars and BACK up to place.

9-16 1C, 2C, 5C PROMENADE, 1C casting off one place and crossing to face first corners on bars 15-16 while 2C dance up into 1st place.

17-20 1C SET to first corners and SET to second corners, turning to end on the sidelines between corners.

21-24 2C, 1C, 5C CIRCLE six hands round to the left.

25-28 2C, 1C, 5C ADVANCE AND RETIRE

29-32 2C, 1C, 5C TURN BH, 1C turning 1½ to own sides.

8



THE MEWS

8x32 J.....5C Borealis/Williams

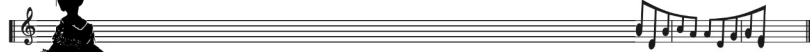
1-8 1W CAST below 5W and DANCE UP the middle while 1M DANCE DOWN the middle and UP BEHIND THE MEN to end in original places, facing down. 2C and 5 end facing up.

9-16 1C, 2C, 5C dance right shoulder REELS OF 5.

17-20 1C and 2C TURN 3/4 RH into a line across the set and BALANCE.

21-24 1C and 2C TURN 3/4 RH to end with 2C in first place and SET, facing up and down bar 23 and across on bar 24.

25-32 2C and 1C dance RIGHTS AND LEFTS.



9

NEIDPATH CASTLE

3x32 S..... 3C set..... RSCDS 22

1-8 All SET on the sides, TURN BH TWICE with partners, and SET on the sides.

9-16 All dance a GRAND CHAIN (2C face down, 3C face up, 1C cross to begin)

17-24 1C dance mirror FIGURES OF EIGHT around the 2C and 3C, beginning by dancing between 2C with nearer hands joined, then behind 3C, up between 3C with nearer hands joined, then up behind 2C finishing in position to dance half poussette with 2C, who dance in on bar 24.

25-28 1C and 2C dance a HALF POUSSETTE. 2C finish at the top, while 1C turn in the middle ready to dance half poussette with 3C, who dance in on bar 28.

29-32 1C and 3C dance a HALF POUSSETTE, 1C finishing in 3rd place.

10



JOHNNIE'S WELCOME HOME

Suggested for those familiar with the dance

8x40 R..... 3C RSCDS 32

1-8 1C, 2C, 3C SET and CROSS RH, SET and CROSS RH to original places.

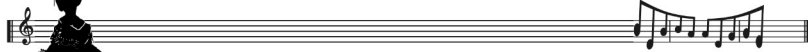
9-20 1C, 2C, 3C dance RIGHTS AND LEFTS FOR 3 COUPLES.

21-24 1C CAST to end in a diagonal line giving LH to partner, RH to first corners.

25-32 All dance the SPOKE.

33-36 1C dance HALF FIGURES OF EIGHT, 1W dancing between 2C and around 2M, 1M dancing between 3C and around 3W.

37-40 1C TURN 1½ LH to end in 2nd place on own sides.



11

CHILD'S PLAY

3x40 J..... 3C set.....New Friends/Shirley

1-8 1C CROSS RH, CAST one place, CROSS RH, and LEAD UP to original places.

9-16 1C and 2C REPEAT bars 1-8.

17-24 1C, 2C, 3C REPEAT bars 1-8.

Meanwhile Figure:

25-40 2C and 3C dance HALF RIGHT HANDS ACROSS, SET, HALF RIGHT HANDS ACROSS, SET, HALF RIGHT HANDS ACROSS, SET, CROSS RH, and SET (NOTE: 2C and 3C do not take hands on the sides while setting)

while 1C CAST, CROSS RH, CAST to the right (woman up, man down), CROSS RH up and down the set, CAST to the right (woman up, man down) to 2nd place on opposite sides, CROSS RH, and SET.

Note: All 3 couples SET, CROSS RH, and SET together during the last 6 bars.

12



KETTLE RIVER

8x32 S..... 3C ... New Friends/Friedman-Sbedlov

1-4 1C SET and CAST to 2nd place.

5-8 1C TURN 1 1/2 BH and turn inside out to end facing first corners.

9-12 1C SET and TURN BH with first corners, ending facing second corners.

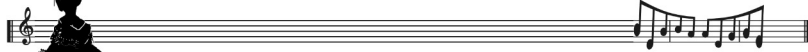
13-16 1C SET and TURN BH with second corners.

17-20 1C CIRCLE 3 hands round to the left with corners. 1C finish by pulling right shoulders back to face each other in the middle of the set.

21-24 1C TURN BH and SET ADVANCING to pass left shoulders and end facing own side of the dance.

25-28 1C CIRCLE 3 hands round to the left with partner's corners. 1C finish by pulling right shoulders back to face each other in the middle of the set.

29-32 1C TURN BH and pull right shoulders back to CURVE INTO 2nd place on own sides.



13

THE SILVER SQUARE

Suggested for those familiar with the dance

5x32 R..... **5C square set**..... **Glasspool**

1C, 2C, 3C, 4C form a normal square.

5C is in the middle facing 1C to begin.

1-8 1C, 5C, 5C dance **PARALLEL REELS OF 3** up and down the dance.

9-16 2C, 5C, 4C dance **SHADOW REELS OF 3** across the dance. To begin, 2C and 4C face down, 5C gives left shoulder to 4C. 4W, 5M, and 2M lead their partners through the reel.

17-20 1C and 5C dance **HALF RIGHTS AND LEFTS**.

21-24 1C and 5C **CIRCLE** four hands round to the left, ending with 1C in the middle.

25-32 1C **SPIN** in the middle for 8 bars and end facing 1st position.

while 2C, 3C, 4C, 5C **CIRCLE** eight hands round to the left halfway, **SET**, pull right shoulders back and **DANCE CW** one place to finish 2C facing 1C.

14



BURNS NIGHT

8x32 J..... **2C** **McOwen**

1-2 1M and 2W **CROSS RH**.

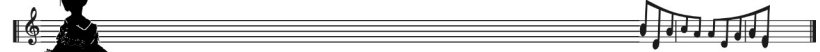
3-4 1W and 2M **CROSS RH**.

5-8 1C and 2C dance **SET AND LINK**: All set giving hands on the sidelines (bars 5-6). 1W casts up to 1st place, 2W dances down and curves into 2nd place, 1M dances up and curves into 1st place, 2M casts down to 2nd place (bars 7-8).

19-16 **REPEAT** bars 1-8 to original places.

17-24 1C **CROSS RH** and retain hands. Joining left hands under right hands, **SLIP DOWN** the middle for 2 bars, **SLIP UP** the middle for 2 bars. Retaining both hands, **CROSS** back to own sides using *pas de basque*, bringing right hands up on bar 24 ready for

25-32 1C and 2C **ALLEMANDE**.



15

THE SILVER TASSIE

8x32 S.....5CRSCDS Leaflet

1-4 1C, 2C, 5C CROSS RH and SET on the sidelines.

5-8 REPEAT bars 1-4 to original positions.

9-16 1C and 5C dance DOUBLE FIGURES OF EIGHT around 2C. To begin, 1C cross down while 5C casts up.

17-24 1C, followed by 2C and 5C, DANCE DOWN the middle for 4 bars. 1C DANCE UP the middle, followed by 2C and 5C, who divide to let 1C dance between them.

25-32 1C and 2C dance the RONDEL to change places.

16



DURAN RANGER

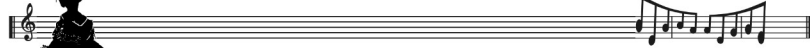
8x32 R.....5CRSCDS 15

1-8 1C LEAD DOWN for 4 bars. 1W cross under 1M's arm and 1C LEAD UP to end in 2nd place on opposite sides (2C step up on bars 3-4).

9-16 2C and 1C dance RIGHTS AND LEFTS. 1C finish facing first corners.

17-24 1C TURN CORNER PARTNER CORNER PARTNER, finishing in 2nd place on own sides.

25-32 2C and 1C CIRCLE four hands round and back.



17

KINGUSSIE FLOWER

8x40 R.....2CRSCDS 21

1-8 1C DANCE DOWN the middle and UP.

9-12 1W and 2M SET and TURN RH

13-16 1M and 2W SET and TURN RH finishing in the middle ready for

17-24 1C and 2C dance a REEL OF 4 across the set finishing ready for

25-32 1C and 2C dance a PROMENADE.

33-40 1C and 2C dance a POUSSETTE to change places.

18



THE FAIR ISLE STACS

8x32 S.....2CImperial Bk. 3

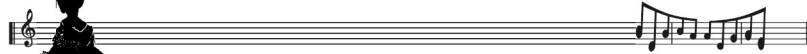
1-8 1C and 2C ADVANCE AND RETIRE, then dance BACK-TO-BACK.

9-16 1C LEAD DOWN for 2 bars, TURN RH HALFWAY, LEAD UP for 2 bars, and CAST to 2nd place on opposite sides.

17-24 1C and 2C dance a LADIES' CHAIN.

25-28 1C dance HALF A FIGURE OF EIGHT around 2C.

29-32 1C and 2C TURN RH.



19

RUSH HOUR REEL

3x48 R..... 3C set..... *New Friends/Dam*

1-4 1M, followed by 2M and 3M, CHASE CW halfway around the set while 1W, followed by 2W and 3W, CHASE CCW halfway around the set. (All pass partners right shoulder, women to the inside and men to the outside, as they cross the top of the set)

5-8 All SET TWICE taking hands on the sidelines.

9-12 REPEAT bars 1-4, continuing to chase in the same direction. (All pass partners right shoulder, women to the inside and men to the outside, as they cross the bottom of the set).

13-16 All dance BACK-TO-BACK with partner.

17-32 All dance MIRROR REELS OF 3 on opposite sides and own sides (i.e. crossover reels with ALL couples crossing over to the other side of the set after dancing through 1st place).

33-40 1C LEAD DOWN for 3 bars, TURN RH for 2 bars, and LEAD UP for 3 bars.

41-48 All dance a 3-COUPLE POUSSETTE.

20



BONNY BLUE BRIDE

8x32 J..... 3C *Wee Hoose on the Prairie/McCall*

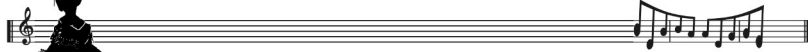
1-8 1C LEAD DOWN the middle AND UP.

9-16 1C, 2C, 3C DANCE IN towards partners to take nearer hands facing up, 1C CAST to 3rd place, followed by 2C and 3C, and all DANCE UP to place with nearer hands joined.

17-20 1C, 2C, 3C dance BACK-TO-BACK.

21-24 1C, 2C, 3C TURN RH

25-32 1C CROSS RH, CAST to 2nd place, CROSS DOWN without hands below 3C, and CAST up to 2nd place on own sides. 2C steps up on bars 27-28.



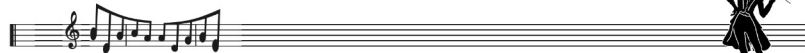
21

THE McCLELLAN KNOT

8x32 S.....5C *Wee Hoose
on the Prairie/McCall*

- 1-2 1W, in a clockwise loop, dance TOWARD PARTNER AND BACK to place.
- 3-4 1W, followed by her partner, CAST to 2W's place. 2C steps up.
- 5-8 1W, followed by her partner, dance UP THE MIDDLE, CAST around 2M, and then dance ACROSS the set to end in 2nd place, 1W facing out, 1M facing in.
- 9-12 1C and 3C dance RIGHT HANDS ACROSS. 1W ends facing out.
- 13-16 1C and 2C dance LEFT HANDS ACROSS. 1W ends facing in.
- 17-18 1C SET ADVANCING, passing left shoulders to end facing first corners.
- 19-20 1C TURN BH with first corners to end 1M between 3C facing up and 1W between 2C facing down.
- 21-24 1C REPEAT 17-20 with second corners, ending ready for
- 25-32 6-bar REELS OF 3 on the sides, 1C giving left shoulders to first corners to begin. 1C CROSS RH to own sides to finish in 2nd place on own sides.

22



MISS ALLIE ANDERSON

8x32 J.....5C *RSCDS Leaflet*

- 1-4 All CLAP and 1W, 2W, 3W DANCE AROUND PARTNERS, passing them by the right shoulder to begin.
- 5-8 3C, 2C, 1C LEAD DOWN the middle.
- 9-12 Men turn partners under right arm and LEAD UP to original places on opposite sides.
- 13-16 1C, 2C, 3C SET and TURN RH, staying in the middle for
- 17-24 1C, 2C, 3C PROMENADE.
- 25-28 1C and 2W dance RIGHT HANDS ACROSS. 2M steps up to 1st place on bars 27-28.
- 29-32 1C and 2M dance LEFT HANDS ACROSS. 2W steps up to 1st place on bars 31-32.



23

SCOTTISH REFORM

8x32 J.....2C RSCDS 3

- 1-4 1C CROSS RH HALFWAY, moving down between 2C. Give LH to 2C to form a line across and BALANCE.
- 5-8 1C drop hands and TURN LH HALFWAY with 2C to put 2C in the middle and BALANCE.
- 9-12 1C and 2C TURN LH HALFWAY to put 1C back in the middle and BALANCE.
- 13-16 1C RH HALFWAY and curve back into place.
- 17-24 1C DANCE DOWN the middle and UP.
- 25-32 1C and 2C POUSSETTE.

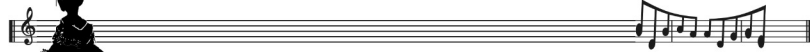
24



MONYMUSK

8x32 S.....3C RSCDS 11

- 1-4 1C TURN RH and CAST off one place.
- 5-8 1C TURN 1 1/4 LH to end 1W between 2C facing down, 1M between 3C facing up.
- 9-12 SET TWICE in lines of three across. On bars 11-12, 1C dance a petronella turn to end in 2nd place on opposite sides.
- 13-16 SET TWICE taking hands on the sidelines.
- 17-24 2C, 1C, 3C CIRCLE six hands round and back.
- 25-32 Dance 6-bar REELS OF 3 on the sidelines, 1C giving right shoulders to the person on their right to begin and crossing over to own sides in 2nd place to finish.



25

DE'IL AMANG THE TAILORS

8x32 S..... 3C RSCDS 14

1-4 1C and 2C SET and dance HALF RIGHT HANDS ACROSS.

5-8 1C and 2C SET and dance HALF LEFT HANDS ACROSS.

9-16 1C LEAD DOWN the middle and UP.

17-24 1C and 2C ALLEMANDE.

25-32 S2C, 1C, 3C CIRCLE six hands round and back.



RSCDS TWIN CITIES BRANCH

2000 BALL COMMITTEE

Judith Palmateer..... Committee Chair

Sarah MacKay..... Registration

Jerry Corwin..... Publications

Bonny McIntyre..... Dance Program Selection

Lara Friedman-Shedlov..... Dance Notes

Jean Logue..... Decorations

Tim Dickson..... Hospitality

Hazel Shirley, John Shackleton..... Ball Registrations

Eric Dam, Katrina Begordis, Holly Schoonover

1999-2000 BOARD MEMBERS

President: Audrey McClellan

Secretary: Judith Palmateer

Treasurer: Mike McClellan

Members at Large:

Katrina Begordis, Eric Dam, Tim Dickson, Tom Riley, Hazel Shirley

Teachers' Committee Representative: Lara Friedman-Shedlov

MASKED BALL DANCE PROGRAM

* Johnnie's Welcome Home and The Silver Square are suggested for those familiar with them.

<i>Grand March</i>		
<i>Mary Stewart</i>	32 S (round the room)	pg 0
<i>The Happy Meeting</i>	8x32 J	pg 0
<i>Beyond Ambivalence</i>	8x40 R	pg 0
<i>Up in the Air</i>	8x32 S	pg 0
<i>The Mews</i>	8x32 J	pg 0
<i>Neidpath Castle</i>	5x32 S (5-couple set)	pg 0
<i>Johnnie's Welcome Home*</i> ..	8x40 R	pg 0

❁ FIRST INTERVAL ❁

<i>Child's Play</i>	5x40 J (5-couple set)	pg 0
<i>Kettle River</i>	8x32 S	pg 0
<i>The Silver Square*</i>	5x32 S	
	(5-couple square set)	pg 0
<i>Burns Night</i>	8x32 J	pg 0
<i>Silver Tassie</i>	8x32 S	pg 0
<i>Duran Ranger</i>	8x32 R	pg 0

❁ SECOND INTERVAL ❁

<i>Kingussie Flower</i>	8x40 R	pg 0
<i>Fair Isle Stacs</i>	8x32 S	pg 0
<i>Rush Hour Reel</i>	5x48 R (5-couple set)	pg 0
<i>Bonny Blue Bride</i>	8x32 J	pg 0
<i>McClellan Knot</i>	8x32 S	pg 0
<i>Miss Allie Anderson</i>	8x32 J	pg 0

EXTRAS

<i>Scottish Reform</i>	8x32 J	pg 0
<i>Monymusk</i>	8x32 S	pg 0
<i>De'il Among the Tailors</i>	8x32 R	pg 0